



**India Meteorological Department
(Ministry of Earth Sciences)**

BULLETIN NO. 3 (BoB/02/2023)

TIME OF ISSUE: 0915 HOURS IST **DATED: 10.05.2023**
FROM: INDIA METEOROLOGICAL DEPARTMENT (FAX NO. 24643965/24699216/24623220)

TO: CONTROL ROOM, NDM, MINISTRY OF HOME AFFAIRS (FAX.NO. 23093750)
CONTROL ROOM NDMA (FAX.NO. 26701729)
CABINET SECRETARIAT (FAX.NO.23012284, 23018638)
PS TO HON'BLE MINISTER FOR S & T AND EARTH SCIENCES (FAX NO.23316745)
SECRETARY, MOES (FAX NO. 24629777)
H.Q. (INTEGRATED DEFENCE STAFF AND CDS) (FAX NO. 23005137/23005147)
DIRECTOR GENERAL, DOORDARSHAN (23385843)
DIRECTOR GENERAL, AIR (23421105, 23421219)
PIB MOES (FAX NO. 23389042)
UNI (FAX NO. 23355841)
D.G. NATIONAL DISASTER RESPONSE FORCE (NDRF) (FAX NO. 26105912, 2436 3260)
DIRECTOR, PUNCTUALITY, INDIAN RAILWAYS (FAX NO. 23388503)
CHIEF SECRETARY, ANDAMAN & NICOBAR ISLANDS (FAX NO. 03192- 232656)
CHIEF SECRETARY, GOVT. WEST BENGAL (FAX NO. 033-22144328)
CHIEF SECRETARY, GOVT. OF ODISHA (FAX NO. 0674 -2536660)
CHIEF SECRETARY, GOVT. OF ANDHRA PRADESH (FAX NO. 0863-2441029, 08645-246600)
CHIEF SECRETARY, GOVT. OF TAMIL NADU (FAX NO. 044-25672304)
CHIEF SECRETARY, GOVT. OF PUDUCHERRY (FAX NO. 0413-2337575, 2334145)
CHIEF SECRETARY, GOVT. OF TRIPURA (FAX NO. 0381-2414013, 2413200)
CHIEF SECRETARY, GOVT. OF MIZORAM (FAX NO. 0389-2322745, 2320588)

Sub: Depression intensified into a Deep Depression over southeast Bay of Bengal

The depression over southeast Bay of Bengal moved west-northwestwards with a speed of 05 kmph during past 06 hours, intensified into a Deep Depression and lay centered at 0530 hours IST of today, the 10th May 2023 over the same region near latitude 8.5°N and longitude 89.0.°E, about 540 km west-southwest of Port Blair, 1460 km south-southwest of Cox's Bazar (Bangladesh) and 1350 km south-southwest of Sittwe (Myanmar).

It is very likely to move northwestwards for some time and then north-northwestwards and intensify gradually into a cyclonic storm over the same region around today evening. Then continuing to move north-northwestwards, it will gradually intensify further into a severe cyclonic storm by 11th May morning and very severe cyclonic storm by 11th May mid-night over southeast and adjoining central Bay of Bengal. Thereafter, it is likely to recurve gradually, move north-northeastwards and weaken slightly from 13th may and cross southeast Bangladesh and north Myanmar coasts between Cox's Bazar (Bangladesh) and Kyaukpyu (Myanmar) around forenoon of 14th May, 2023 with maximum sustained wind speed of 110-120 kmph gusting to 130 kmph.

Forecast track and intensity are given below:

Date/Time (IST)	Position (Lat. °N/ long. °E)	Maximum sustained surface wind speed (Kmph)	Category of cyclonic disturbance
10.05.23/0530	8.5/89.0	50-60 gusting to 70	Deep Depression
10.05.23/1130	9.1/88.6	55-65 gusting to 75	Deep Depression
10.05.23/1730	9.7/88.1	60-70 gusting to 80	Cyclonic Storm
10.05.23/2330	10.3/87.7	70-80 gusting to 90	Cyclonic Storm
11.05.23/0530	11.0/87.6	90-100 gusting to 110	Severe Cyclonic Storm
11.05.23/1730	11.9/87.5	105-115 gusting to 125	Severe Cyclonic Storm
12.05.23/0530	13.1/87.6	125-135 gusting to 150	Very Severe Cyclonic Storm
12.05.23/1730	14.3/88.2	130-140 gusting to 155	Very Severe Cyclonic Storm
13.05.23/0530	15.8/89.3	140-150 gusting to 165	Very Severe Cyclonic Storm
13.05.23/1730	17.9/90.8	130-140 gusting to 155	Very Severe Cyclonic Storm
14.05.23/0530	20.0/92.2	120-130 gusting to 140	Very Severe Cyclonic Storm
14.05.23/1730	22.1/93.5	55-65 gusting to 75	Deep Depression

Warnings:

(i) Rainfall (warning graphics enclosed)

- ❖ **Andaman & Nicobar Islands:** Rainfall at most places with Heavy to very heavy rainfall at isolated places is likely till 11th May. Heavy rainfall at isolated places over Andaman Islands is likely on 12th May.
- ❖ **Tripura & Mizoram:** Rainfall at many places with Heavy rainfall at isolated places is likely on 13th May and heavy to very heavy rainfall at isolated places on 14th May.
- ❖ **Nagaland, Manipur, east Arunachal Pradesh & south Assam:** Rainfall at many places with Heavy rainfall at isolated places is on 14th May.

(ii) Wind warning:

- ❖ **Andaman & Nicobar Islands:** Squally wind speed reaching 45-55 kmph gusting to 65 kmph are prevailing and becoming 50-60 kmph gusting to 70 kmph from 10th May forenoon till 11th May.
- ❖ **Andaman Sea:** Squally wind speed reaching 45-55 kmph gusting to 65 kmph are prevailing and becoming 50-60 kmph gusting to 70 kmph from 10th May forenoon till 12th forenoon.
- ❖ **Southeast Bay of Bengal:** Squally wind speed reaching 50-60 kmph gusting to 70 kmph are prevailing and becoming 60-70 kmph gusting to 80 kmph from today evening, Gale wind speed reaching 90-100 kmph gusting to 110 kmph from 11th morning and becoming 120-130 kmph gusting to 140 kmph by 12th morning and decrease thereafter becoming squally wind speed reaching 50-60 kmph gusting to 70 kmph by 13th May.
- ❖ **Eastcentral Bay of Bengal:** Squally weather with wind speed reaching 40-50 kmph gusting to 60 kmph are prevailing and becoming 60-70 kmph gusting to 80 kmph by 11th morning. Gale wind speed reaching 80-100 kmph gusting to 120 kmph on 11th evening becoming 130-140 kmph gusting to 150 kmph from 12th May evening and 140-150 kmph gusting to 160 kmph on 13th May, and then gradually decrease becoming 100-110 gusting to 120 by 14th morning.
- Westcentral Bay of Bengal:** Squally weather with wind speed reaching 40-50 kmph gusting to 60 kmph are prevailing and becoming 50-60 kmph gusting to 70 kmph from today evening. Gale wind speed reaching 60-70 kmph gusting to 80 kmph becoming 80-90 kmph gusting to 100 kmph on 11th May.

Gale wind speed reaching 110-120 kmph gusting to 130 kmph on 12th and becoming 90-100 kmph gusting to 110 kmph from 13th morning and gradually decrease thereafter.

❖ **Northeast Bay of Bengal:**

Squally wind speed reaching 50-60 kmph gusting to 70 kmph is likely on 12th May.

Gale wind speed reaching 70-80 gusting to 90 likely to commence from 13th morning and gradually increase and becoming 110-120 kmph gusting 130 kmph from 13th night to 14th forenoon and significantly decrease thereafter.

❖ **Tripura and Mizoram:**

Squally wind speed reaching 40-50 kmph gusting to 60 kmph is very likely to prevail on 14th May.

(iii) Sea condition

❖ **Andaman Sea:**

Rough to very rough over south Andaman Sea very likely to prevail till today evening.

Very rough to high over Andaman Sea from 10th evening to 11th May.

Very rough to rough over north Andaman Sea during 12th May.

❖ **Southeast Bay of Bengal:**

Rough to very rough very likely to prevail till today evening..

Very rough to high from 10th evening to 11th May.

High to very high on 12th May.

❖ **Eastcentral Bay of Bengal:**

Rough to very rough very likely to prevail till today evening.

High to very high from 10th evening to 11th May.

Very High to phenomenal during 12th & 13th May.

❖ **Westcentral Bay of Bengal:**

Rough to very rough very likely to prevail till today evening.

Very rough to high from 10th May evening to 11th May.

High to Very High on 12th May.

❖ **Northeast Bay of Bengal:**

Rough to very rough on 12th May.

High to very high during 13th & 14th May.

(iv) Fishermen Warning (warning graphics enclosed)

❖ Fishermen, small ships, boats and trawlers are advised not to venture into southeast & central Bay of Bengal and south Andaman Sea till 11th May.

❖ Fishermen, small ships, boats and trawlers are advised not to venture into northeast & central Bay of Bengal and north Andaman Sea during 12th-14th May.

❖ Those over central Bay of Bengal and north Andaman Sea are advised to return by today, the 10th May.

(v) Advisory

❖ Regulation of tourism and offshore activities and shipping near Andaman & Nicobar Islands till 12th May and near north Andaman till 13th May.

❖ Regulation of shipping activity over the sea areas of southeast & central Bay of Bengal and Andaman Sea till 13th May.

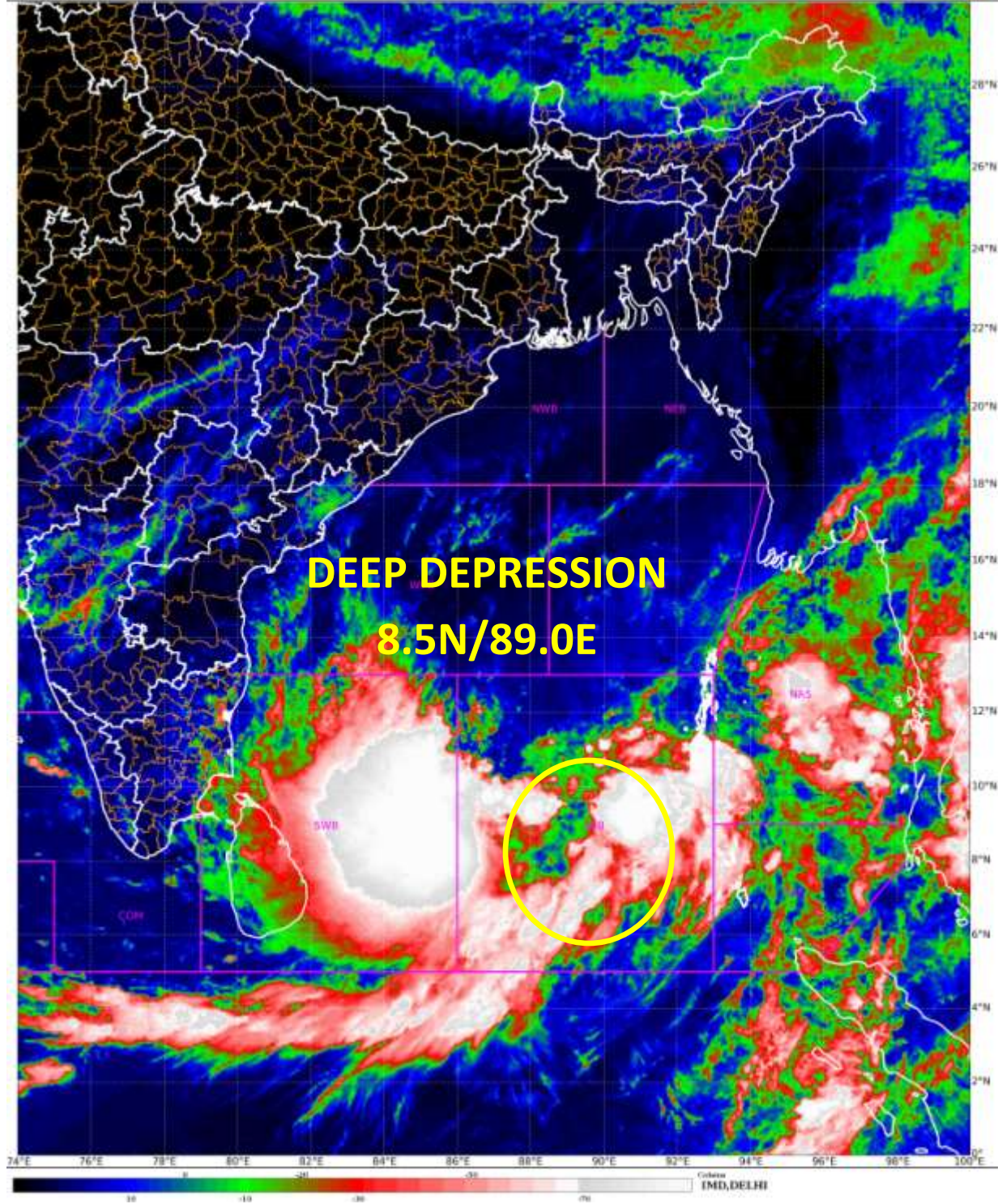
❖ Regulation of shipping activity over the sea areas of northeast Bay of Bengal during 12th-14th May.

The system is under continuous surveillance and the next message will be issued at 1130 hours IST of today, the 10th May 2023.

(Ananda Kumar Das)

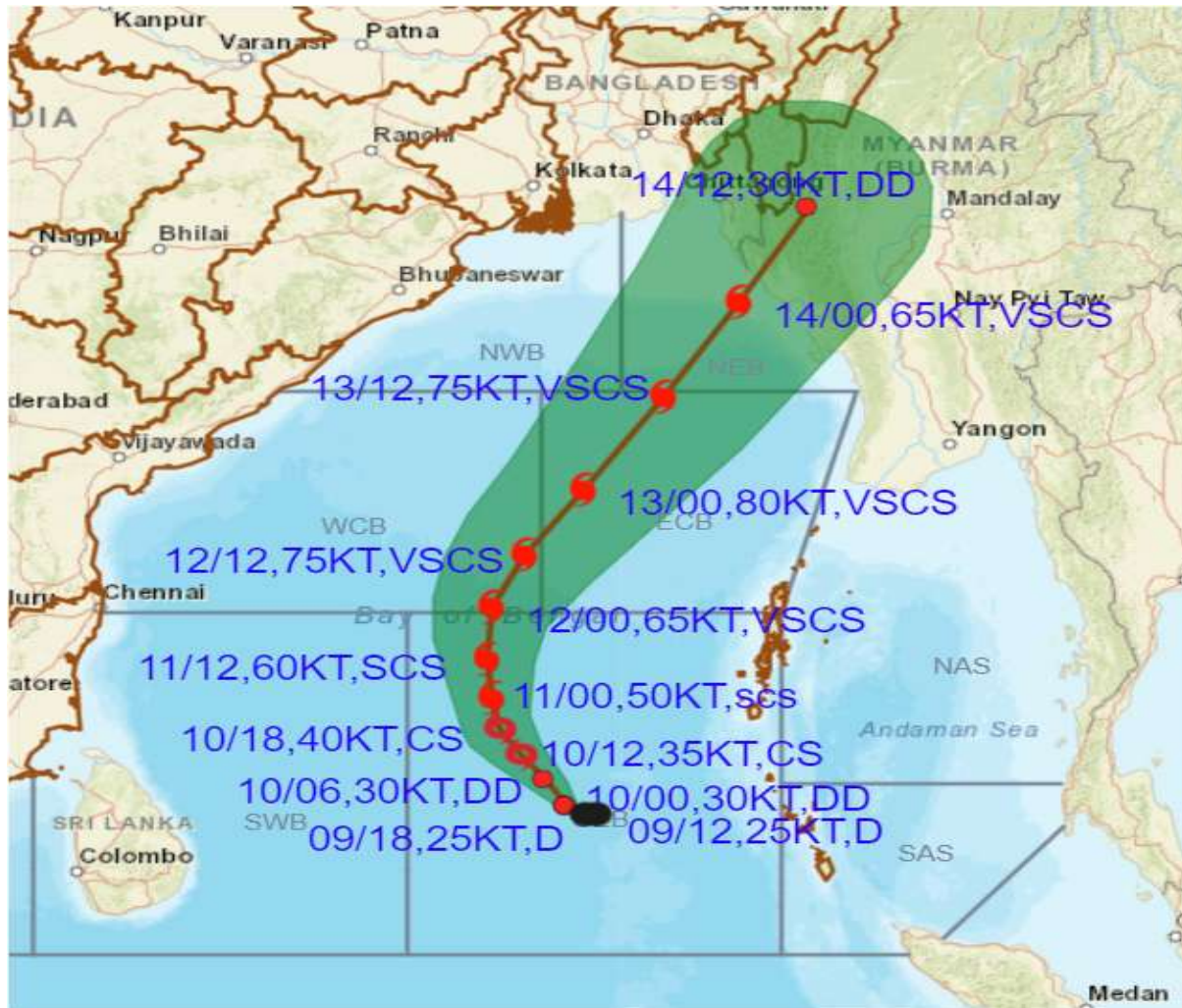
Scientist F, Cyclone Warning Division, New Delhi

Copy to: ACWC Kolkata/ ACWC Chennai/ CWC Bhubaneswar/CWCVisakhapatnam/MO Port Blair





OBSERVED AND FORECAST TRACK ALONGWITH CONE OF UNCERTAINTY OF DEEP DEPRESSION OVER SOUTHEAST BAY OF BENGAL BASED ON 0000 UTC (0530 IST) OF 10TH MAY 2023.



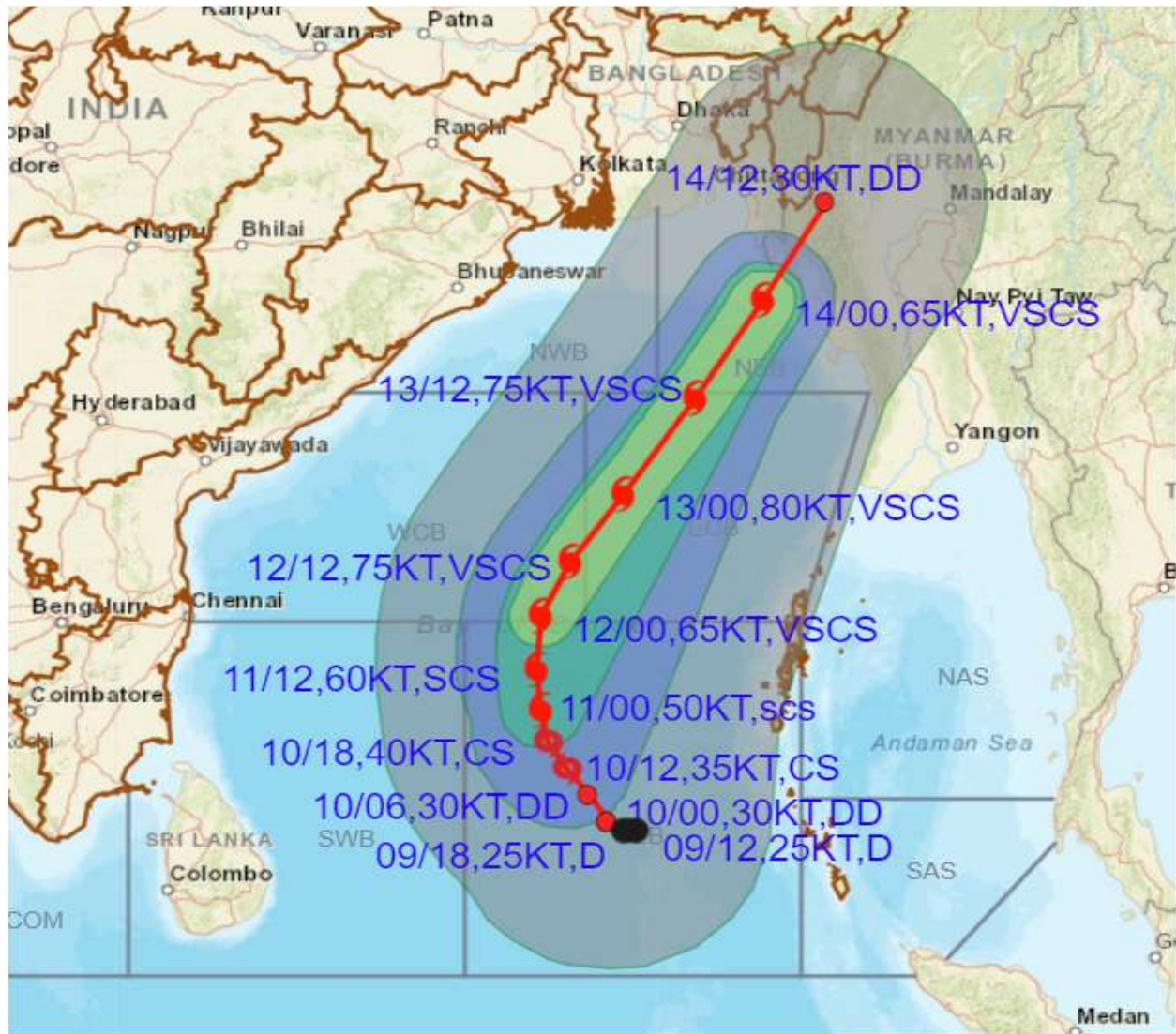
DATE/TIME IN UTC
IST=UTC + 0530

- L: LOW PRESSURE AREA
- WML: WELL MARKED LOW PRESSURE AREA
- D: DEPRESSION (17-27 KT)
- DD: DEEP DEPRESSION (28-33 KT)
- CS: CYCLONIC STORM (34-47 KT)
- SCS: SEVERE CYCLONIC STORM (48-63KT)
- VSCS: VERY SEVERE CYCLONIC STORM (64-89 KT)
- ESCS: EXTREMELY SEVERE CYCLONIC STORM (90-119 KT)
- SuCS: SUPER CYCLONIC STORM (≥ 120 KT)

- LESS THAN 34 KT
- 34.47 KT
- ≥ 48 KT
- OBSERVED TRACK
- FORECAST TRACK
- CONE OF UNCERTAINTY



OBSERVED AND FORECAST TRACK ALONGWITH QUADRANT WIND DISTRIBUTION OF DEEP DEPRESSION OVER SOUTHEAST BAY OF BENGAL BASED ON 0000 UTC (0530 IST) OF 10TH MAY 2023.



DATE/TIME IN UTC

IST=UTC + 0530

L: LOW PRESSURE AREA

WML: WELL MARKED LOW PRESSURE AREA

D: DEPRESSION (17-27 KT)

DD: DEEP DEPRESSION (28-33 KT)

CS: CYCLONIC STORM (34-47 KT)

SCS: SEVERE CYCLONIC STORM (48-63KT)

VSCS: VERY SEVERE CYCLONIC STORM (64-89 KT)

ESCS: EXTREMELY SEVERE CYCLONIC STORM (90-119 KT)

SuCS: SUPER CYCLONIC STORM (≥ 120 KT)

● LESS THAN 34 KT

○ 34-47 KT

● ≥ 48 KT

— OBSERVED TRACK

— FORECAST TRACK

▲ CONE OF UNCERTAINTY

AREA OF MAXIMUM SUSTAINED WIND SPEED:

■ 28-33 KT (52-61 KMPH)

■ 34-49 KT (62-91 KMPH)

■ 50-63 KT (92-117 KMPH)

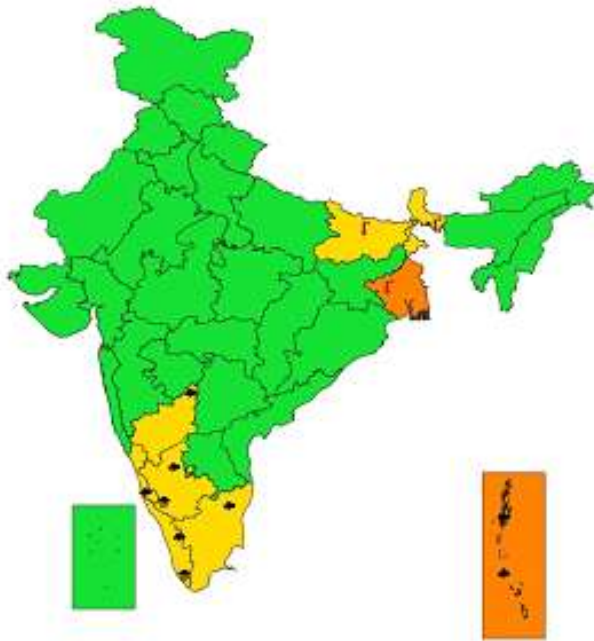
■ ≥ 64 KT (≥118 KMPH)

IMPACT OVER THE SEA

MSW (knot/kmph)	Impact	Action
28-33 (52-61)	Very rough seas	Total suspension of fishing operations
34-49 (62-91)	High to very high seas	Total suspension of fishing operations
50-63 (92-117)	Very high seas	Total suspension of fishing operations
≥ 64 (≥118)	Phenomenal	Total suspension of fishing operations



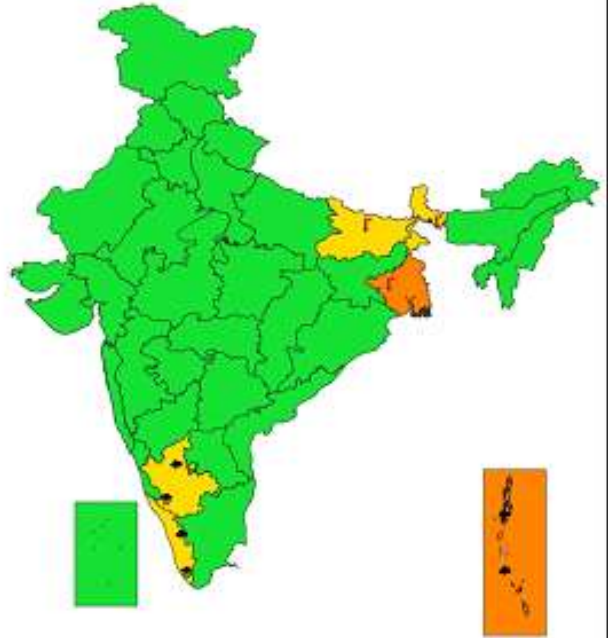
**SUBDIVISIONWISE WEATHER WARNING
(10-5-2023)**



- | | | |
|-----------------------------|------------------------|-------------------------|
| Subdivision Warning | — Dust Storm | Subdivision color |
| ☁ Heavy Rain | ⚡ Strong Surface Winds | 🟢 NO WARNING |
| ❄ Heavy Snow | 🔥 Heat Wave | 🟡 WATCH (BE UPDATED) |
| ⚡ Thunderstorms & Lightning | ❄ Cold wave | 🟠 ALERT (BE PREPARED) |
| 🌨 Hailstorm | 🌫 Fog | 🔴 WARNING (TAKE ACTION) |



**SUBDIVISIONWISE WEATHER WARNING
(11-5-2023)**



- | | | |
|-----------------------------|------------------------|-------------------------|
| Subdivision Warning | — Dust Storm | Subdivision color |
| ☁ Heavy Rain | ⚡ Strong Surface Winds | 🟢 NO WARNING |
| ❄ Heavy Snow | 🔥 Heat Wave | 🟡 WATCH (BE UPDATED) |
| ⚡ Thunderstorms & Lightning | ❄ Cold wave | 🟠 ALERT (BE PREPARED) |
| 🌨 Hailstorm | 🌫 Fog | 🔴 WARNING (TAKE ACTION) |



**SUBDIVISIONWISE WEATHER WARNING
(12-5-2023)**



- | | |
|-----------------------------|--------------------------|
| Subdivision Warning | Subdivision color |
| ☁ Heavy Rain | 🟢 NO WARNING |
| ❄ Heavy Snow | 🟡 WATCH (BE UPDATED) |
| ⚡ Thunderstorms & Lightning | 🟠 ALERT (BE PREPARED) |
| ⚡ Halstorm | 🔴 WARNING (TAKE ACTION) |
| ☁ Dust Storm | |
| 🌪 Strong Surface Winds | |
| 🔥 Heat Wave | |
| ❄ Cold wave | |
| 🌫 Fog | |

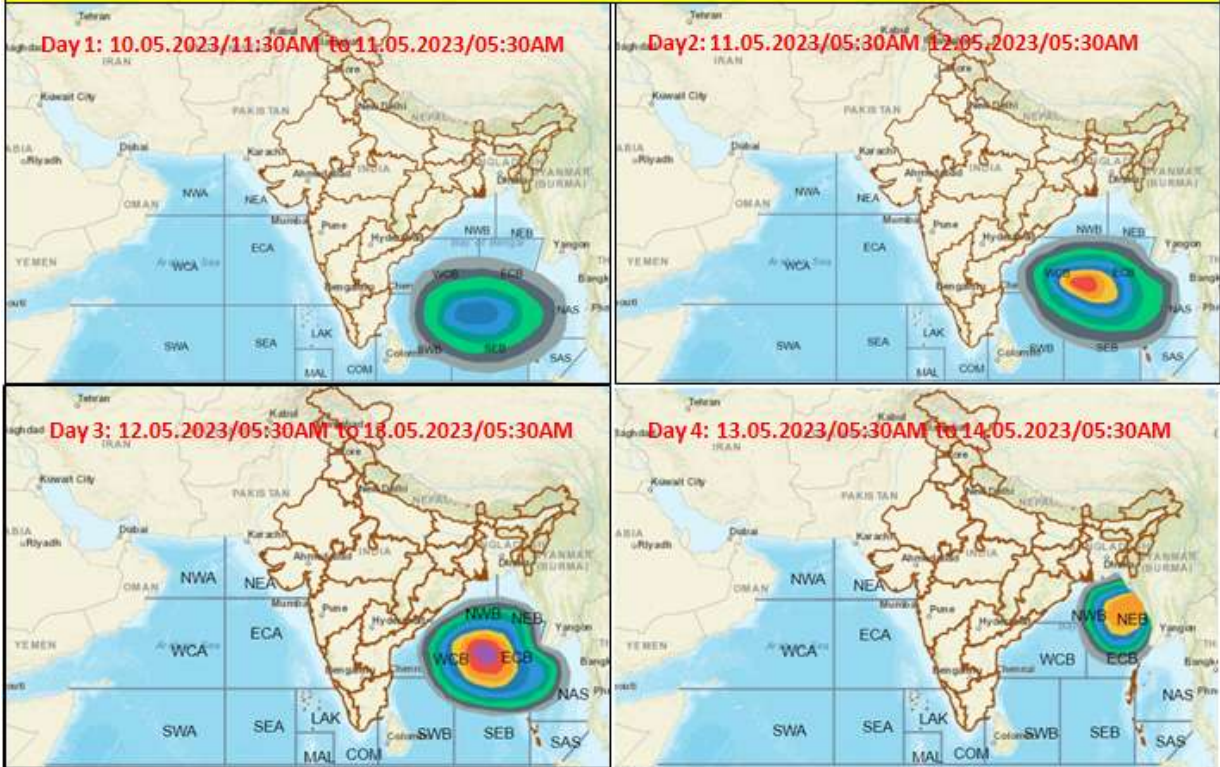


**SUBDIVISIONWISE WEATHER WARNING
(13-5-2023)**



- | | |
|-----------------------------|--------------------------|
| Subdivision Warning | Subdivision color |
| ☁ Heavy Rain | 🟢 NO WARNING |
| ❄ Heavy Snow | 🟡 WATCH (BE UPDATED) |
| ⚡ Thunderstorms & Lightning | 🟠 ALERT (BE PREPARED) |
| ⚡ Halstorm | 🔴 WARNING (TAKE ACTION) |
| ☁ Dust Storm | |
| 🌪 Strong Surface Winds | |
| 🔥 Heat Wave | |
| ❄ Cold wave | |
| 🌫 Fog | |

Fishermen warning graphics



	Squally WX with wind speed 40-50 kmph gusting to 60 kmph
	Squally WX with wind speed 50-60 kmph gusting to 70 kmph
	Gale wind speed 60-70 kmph gusting to 80 kmph
	Gale wind with wind speed 70-80 kmph gusting to 90 kmph
	Gale wind with wind speed 80-90 kmph gusting to 100 kmph
	Gale wind with wind speed 90-100 kmph gusting to 110 kmph
	Gale wind with wind speed 100-110 kmph gusting to 120 kmph
	Gale wind with wind speed 110-120 kmph gusting to 140 kmph
	Gale wind with wind speed 130-140 kmph gusting to 150 kmph
	Gale wind with wind speed 140-150 kmph gusting to 160 kmph

FISHERMEN ARE ADVISED NOT TO VENTURE INTO THE MARKED AREAS